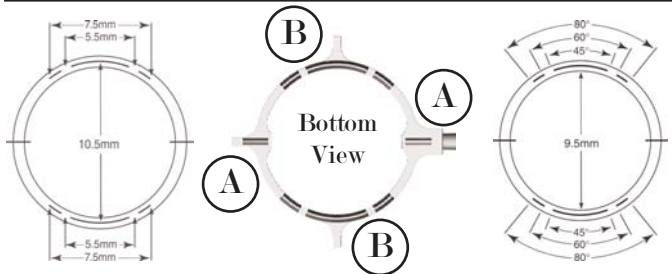


# LRI in 1-2-3

## 1 Marker

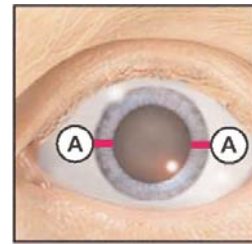


Zaldivar LRI Marker  
AE-2862

Koch LRI Marker  
AE-2863

### Features:

- “A” extensions (in line with the handle) used to mark pre-operative reference lines
- “B” extensions (perpendicular to the handle) used to mark symmetrical arcs along the steepest axis for the diamond knife to trace



With the patient seated upright at the slit lamp, ink the reference marks on the LRI marker and align the “A” extensions to the horizontal axis to mark the 3 and 9 o’clock positions.

Contact ASICO for  
the latest nomograms!

## 2 Degree Gauge

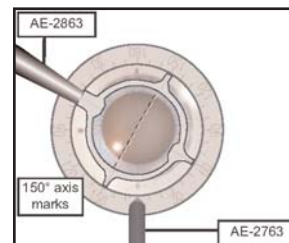


Villasenor-Navarro Degree Gauge  
AE-2763N

Zaldivar Degree Gauge  
AE-2764N

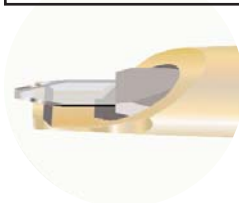
### Features:

- Degree markings every 10-degrees
- Atraumatic fixation teeth used to stabilize the eye during marking
- Inner diameter: 13mm
- Outer diameter: 17mm



Align the 0° and 180° on the degree gauge to the 3 and 9 o’clock reference marks. Ink the marking pattern on the LRI marker and align the “B” extensions to the steepest axis to mark the eye.

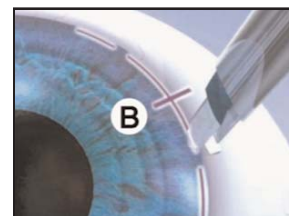
## 3 Diamond Knife



ASICO 3-Step LRI Diamond Knife  
AE-8187

### Features:

- Trifacet blade for controlled entry
- Single-footplate for better visualization
- Side-cutting edges for easy wound extension
- 3 depth settings: 500, 550, and 600µ



Trace the marking pattern with the diamond knife according to the nomogram.

The more you know...™  
**ASICO**  
Today's Precision...Tomorrow's Vision®

ASICO LLC  
26 Plaza Drive • Westmont, IL 60559 • USA  
Phone: 630-986-8032 • Fax: 630-986-0065  
Customer Service: 1-800-628-2879  
www.asico.com • E-mail: info@asico.com



© 2008 ASICO LLC

BR205-08