

Holladay IntraLase™ Double Cross-Hair Centering Device

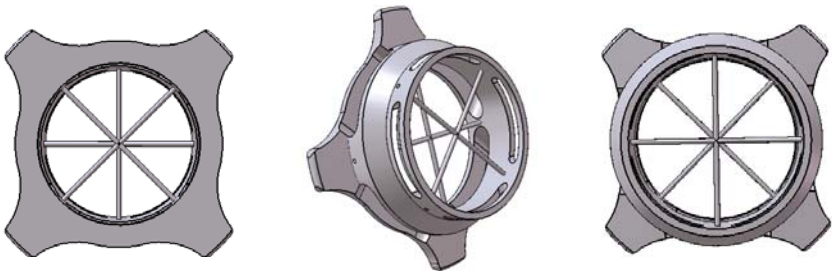
AE-2935



Jack T. Holladay, MD, MSEE, FACS
Bellaire, Texas

Designed to be used with the IntraLase™ suction ring to assure flap centration on the patient's pupil along the axis of the IntraLase™ microscope!

The optimal location of the LASIK flap is concentric with the patient's mesopic pupil center to assure the edge of the bed is not within the treatment area of the excimer ablation. The Holladay IntraLase™ Centering Device has 2 cross-hairs. When both cross-hairs are centered on the patient's pupil, the suction device is along the axis of the microscope and is centered on the patient's pupil. The specially designed tabs allow easy removal after successful suction and the windows in the walls of the cylinder provide maximal illumination of the pupil and iris.



IntraLase™ is a trademark of Advanced Medical Optics

The more you know...™

ASICO®

Today's Precision...Tomorrow's Vision®

ASICO LLC

26 Plaza Drive • Westmont, IL 60559 • USA

Phone: 630-986-8032 • Fax: 630-986-0065

Customer Service: 1-800-628-2879

www.asico.com • E-mail: info@asico.com

© 2008 ASICO LLC



BR255-08